

[Home](#) >

[FlexMeters \(RTX\)](#) [1]



FlexMeters is an RTX extension designed to enable Investor/RT users to display customized meters of market behavior within multi-pane charts. This flexible tool draws meters showing the present value of some price or computed value as compared to a specified range of values seen in the past. FlexMeters can be drawn using a variety of shapes, colors, positions, titles, and labelling options. The underlying data values of a FlexMeter can be price values of the associated instrument, or values computed via an RTL custom indicator; thus there is unlimited flexibility in the kinds of market behavior gauges that be made available to the trader at a glance. The range or scale of the meter may be specified manually or it can be computed from minimum/maximum values of a recent period of trading. Even more flexibility can be gained by specifying the range using C# or V# user variables, which may be set by the user or computed by some RTL indicator elsewhere in the trader's workspace.

- [Read More](#) [1]

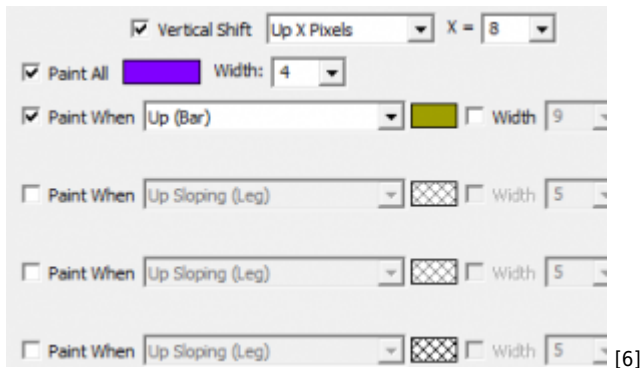
[VolumeScope® \(RTX\)](#) [3]



VolumeScope is the best in class footprint charting available, allowing the user to view per bar market order flow *under a microscope*, closely inspecting the volume at price data with great flexibility. The VolumeScope indicator has three primary components: Background, Text, and Candle. Each is optional and each has a variety of data and presentation settings. Volume is broken down into Ask-Traded Volume (Buying) and Bid-Traded Volume (Selling) at each price. VolumeScope builds upon this information with profiling, coloring, and scaling options based upon relative volume, delta, imbalance, and much more.

- [Read More](#) [3]

[PaintZigZag \(RTX\)](#) [5]



The PaintZigZag (PZZ) RTX Extension paints the legs of the Zig Zag indicator based on a number criteria of each leg or each bar.

- [Read More](#) [5]

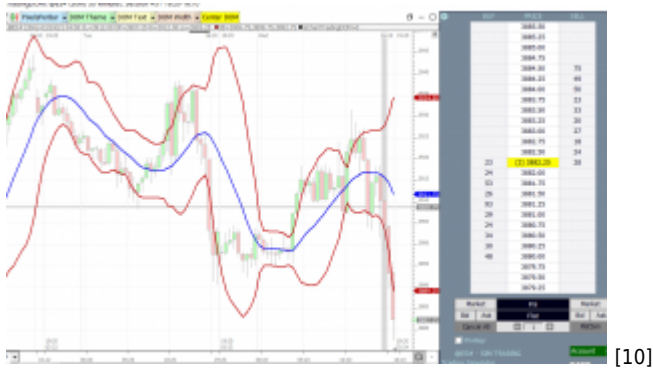
[Chande Momentum Oscillator \(RTX\)](#) [7]



The Chande Momentum Oscillator (CMO) is a technical momentum indicator developed by Tushar Chande. The CMO indicator is created by calculating the difference between the sum of all recent higher closing bar changes and the sum of all recent lower closing bar changes. This result is then divided by the sum of all price changes over the specified number of bars. Finally, the result is multiplied by 100 to give the CMO a range -100 to +100. Typically, an instrument is considered to be overbought when the raw value of the oscillator is above 50 and oversold when it is below -50.

- [Read More](#) [7]

[ChartTradingSample \(@ES#\)](#) [9]



ChartTradingDOM Sample Chart with Bollinger Bands and DOM Buttons

- [Read More](#) [9]

[VolumeScope® Announcement](#) [11]



Linn Software is a leading innovator of market data profiling and volume analysis charting tools for professional traders, creating indicators and real-time market data displays to help traders to identify profit making opportunities and to make more timely trading decisions. Some of our most advanced work in this area was developing the Footprint™ feature, previously available on a charting platform developed by Linn Software, powered by Investor/RT but marketed and distributed by MarketDelta.

- [Watch](#) [11]
- [1 comment](#) [12]

[Clock \(RTX\)](#) [13]



The RTX Clock indicator provides a display of time in analog and/or digital form with extensive customization options.

- [Read More](#) [13]

[True Strength Squeeze \(RTX\)](#) [15]



The TrueStrengthSqueeze (RTX) Indicator combines the True Strength Index with the Squeeze Indicator. The True Strength Index attempts to show both trend direction and overbought or oversold conditions using double-smoothing of momentum relative to double-smoothing of the absolute value of momentum. The Squeeze Indicator identifies when the Bollinger Bands are within the Keltner Channel. Both Bollinger Bands and Keltner Channels center about a moving average of the close with the Bollinger Bands using a multiple of standard deviations and the Keltner Channels using a multiple of Average True

- [Read More](#) [15]

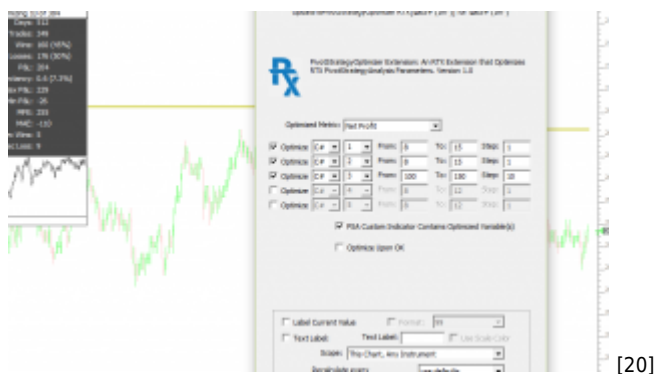
[Divergence \(RTX\)](#) [17]



The Divergence RTX indicator quantifies divergence with a numerical value between two data series using various methods. Each data series may consist of either price data, cumulative delta filtered, filtered cumulative delta, or any other indicator available in Investor/RT.

- [Read More](#) [17]

[Pivot Strategy Optimizer \(RTX\)](#) [19]



The PivotStrategyOptimizer (PSO) builds upon the PivotStrategyAnalysis (PSA) indicator to create an extremely powerful combination. PSO enables the optimization of any combination of a number of variables within PSA, allowing the user to quickly determine the optimal combination of values which would have resulted in maximized profits. PSO can optimize the target, stop, reset distance, frontrun wiggle, allowable trading hours, number of allowable trades/day, or an infinite array of other variables within the custom indicator upon which the PSA is based.

- [Read More](#) [19]

Pages

1

[2](#) [21]

[next >](#) [21]

linnsoft.com

© 1996-2022 Linn Software, Inc. All Rights Reserved.
Investor/RT® is a Registered Trademark of Linn Software, Inc.

Source URL:<https://www.linnsoft.com/node>

Links

[1] <https://www.linnsoft.com/techind/flexmeters-rtx> [2] <https://www.linnsoft.com/sites/default/files/image-1541452542.png>
[3] <https://www.linnsoft.com/techind/volumescopes-rtx> [4]
<https://www.linnsoft.com/sites/default/files/techind/volumescopes.png> [5] <https://www.linnsoft.com/techind/paintzigzag-rtx>
[6] <https://www.linnsoft.com/sites/default/files/image-1587473270.png> [7]
<https://www.linnsoft.com/techind/chande-momentum-oscillator-rtx> [8]
<https://www.linnsoft.com/sites/default/files/chande.png> [9] <https://www.linnsoft.com/charts/charttradingsample-es> [10]
<https://www.linnsoft.com/sites/default/files/chartpics/ctdom.png> [11]
<https://www.linnsoft.com/videos/volumescopes-announcement> [12]
<https://www.linnsoft.com/videos/volumescopes-announcement#comments> [13] <https://www.linnsoft.com/techind/clock-rtx>
[14] <https://www.linnsoft.com/sites/default/files/techind/digitalclocks.png> [15]
<https://www.linnsoft.com/techind/true-strength-squeeze-rtx> [16]
https://www.linnsoft.com/sites/default/files/techind/tss_chart.png [17] <https://www.linnsoft.com/techind/divergence-rtx> [18]
<https://www.linnsoft.com/sites/default/files/techind/divergencechart2.png> [19]
<https://www.linnsoft.com/techind/pivot-strategy-optimizer-rtx> [20]
https://www.linnsoft.com/sites/default/files/techind/pso_chart.png [21] <https://www.linnsoft.com/node?page=1>