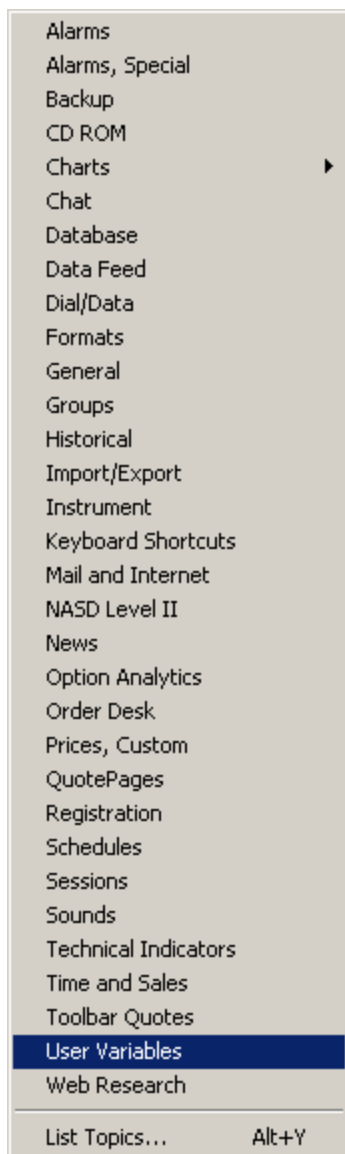
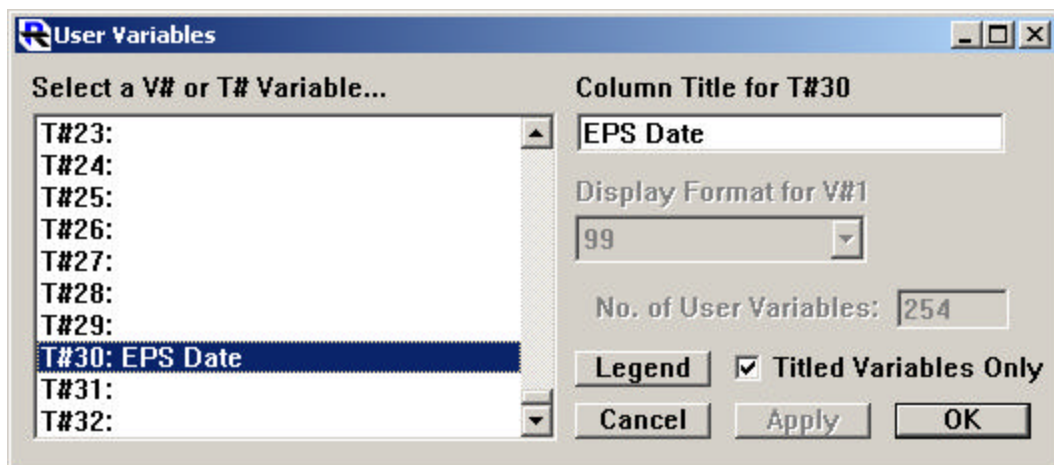


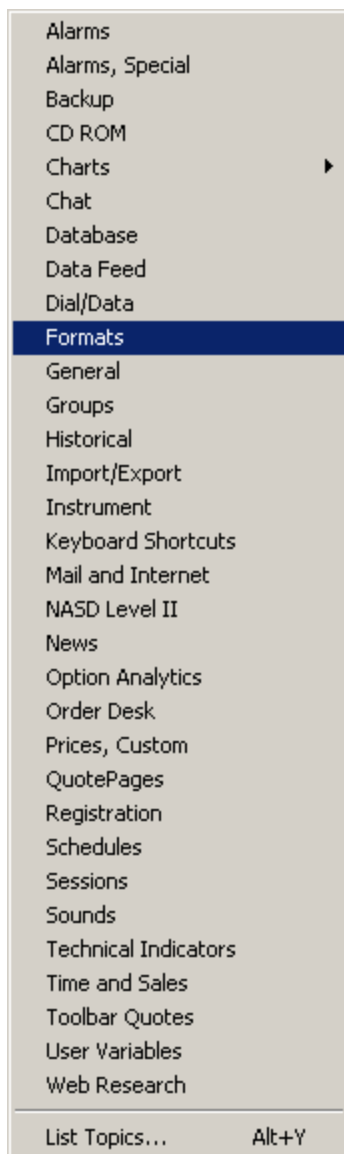
How to import Text into Investor R/T.



This is a quick tutorial on how to import EPS dates into Investor R/T.

- 1.) Go to Preferences and select User Variables
- 2.) Assign a name to the T# number you wish to store the EPS Date in. In this case I chose number 30.

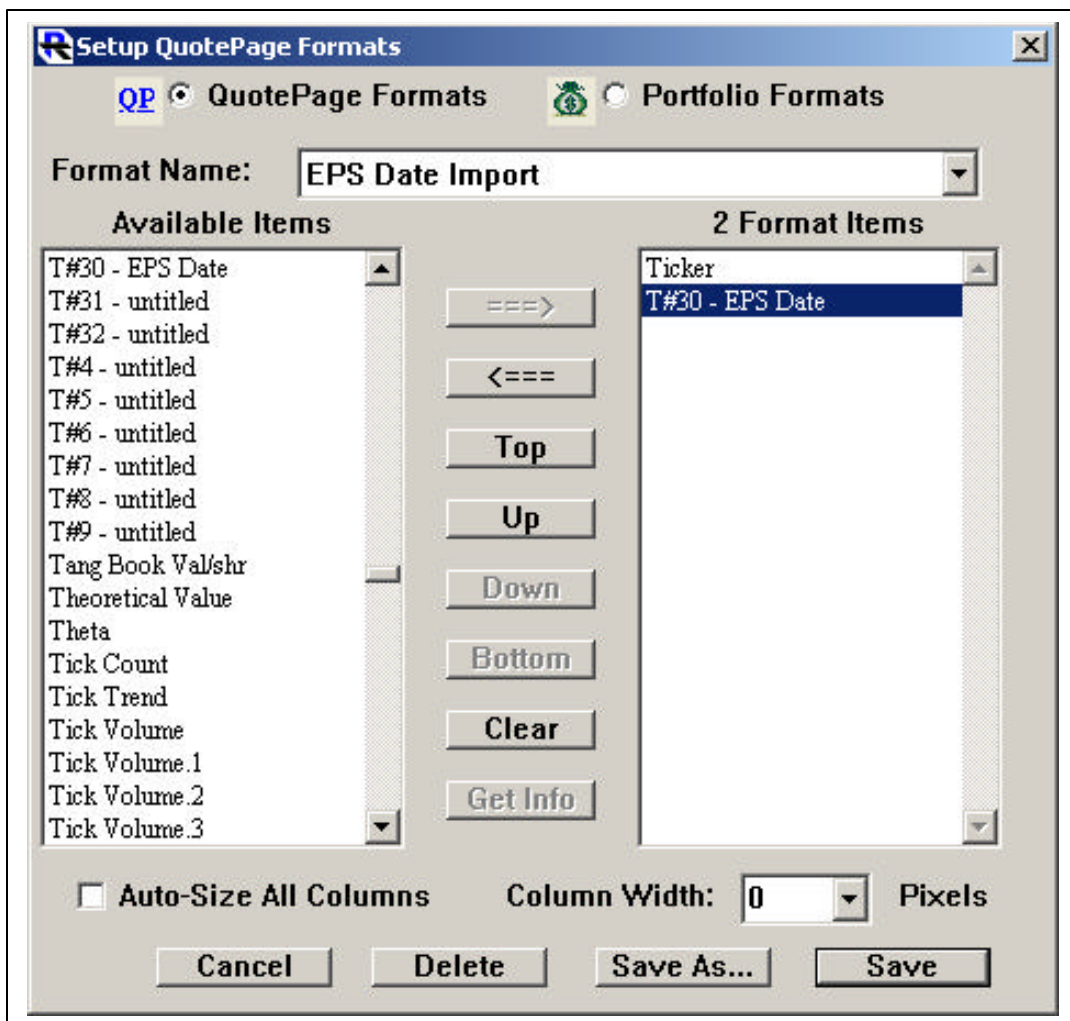




3.) Go back to Preference and select Formats to define a an import format to import the information.

The format I am suggesting here is to use with the information provider web page that is listed below.

4.) Add the fields you need to create the import format adding them in the order that your file has. Ticker must be included to attach each file to the appropriate symbol.



5.) Here is a free site to gather the EPS dates from <http://www.rightline.net/calendar/>

I take the files and dump them into Excel and create a text file with only the columns I need.

RightLine
For Active Traders And Investors
Friday 9, July 2001

EARNINGS RELEASE CALENDAR

Risk increases when holding stock (long or short) through an earnings announcement. Likewise, trading profits can also increase but various factors should be considered when companies near their earnings release date.

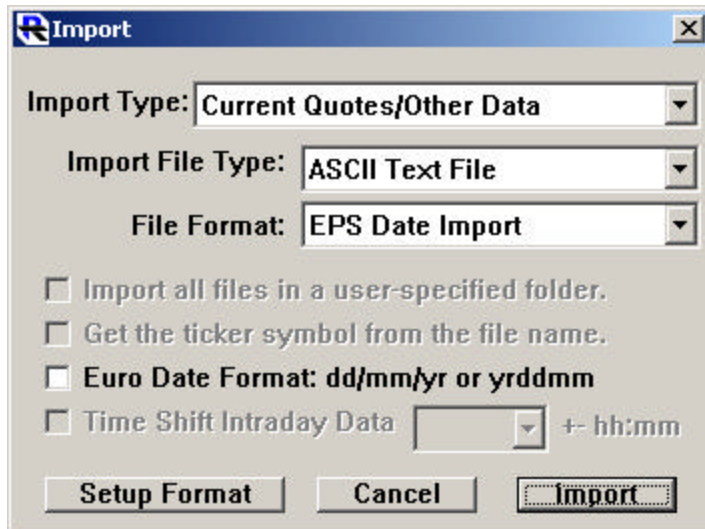
In the [RightLine Trading Education](#) area of this web site you will find a variety of topics including "Earnings, Analyst Expectations, And Market Mood Swings." This article covers position size, stop placement, sympathy trades and more. If you have never considered these in your trading plan then you need to read this article today. If you are already a RightLine subscriber, [register now](#) to obtain access to a host of trading and investing topics, the RightLine Risk Control Calculator and more. There's no obligation and we don't ask for a credit card. You take everything to go and nothing to see.

To search this page input a stock symbol or keyword and hit enter

Warning: News dates, times & estimates do change, especially those beyond the quarter-end. At the earnings date approach, we advise that the date be confirmed by going to the company web site. Updated news, the site is not an all-in-one chart/quote/4-30 per CBT.
A = After the market close B = Before the market open * = Doing market hour U = Time unknown

Company Name	Symbol	Date	Time	Beta	Ytd%
EARNINGS TO BE ANNOUNCED WEEK OF JUL 5 - JUL 9					
Accretion	ACM	7/7	B	0.37	0.28
Jill Speedway	JSCA	7/7	B	0.32	0.27
NBC Industrial	NBN	7/7	B	0.33	0.19
Alcoa	AA	7/7	A	0.48	0.27
Comstock	CSM	7/7	A	0.19	0.16
Suburban Steel	SSSB	7/7	A	1.25	0.52
Yahoo!	YHOO	7/7	A	0.88	0.64
Fleutched	FLC	7/8	B	0.66	-0.68
Pepsi Bottling	PBO	7/8	B	0.51	0.47
Abbott Labs	ABB	7/8	B	0.54	0.52
General Electric	GE	7/8	B	0.37	0.38
EARNINGS TO BE ANNOUNCED WEEK OF JUL 12 - JUL 16					
Citigroup	C	7/12	B	0.57	0.83
Farfetch	FACF	7/12	B	0.41	0.19
Heinz of Troy	HELE	7/12	B	0.44	0.42
Hot Bank	HBT	7/12	B	1.46	1.16
Mowles	MWLS	7/12	B	0.26	0.85
Stow Group	SGP	7/12	B	0.28	0.10
SunTrust Banks	STI	7/12	B	1.26	1.17
Wipac	WIP	7/12	B	0.20	0.17
Ecovest	ECV	7/12	A	0.46	0.41
Cintas	CTAS	7/12	A	0.40	0.38
Elac For Imaging	EFII	7/12	A	0.24	0.17
EMC Holdings	EMC	7/12	A	1.59	1.47
Progressive	PRG	7/12	A	-0.82	-0.14
Parsons	PARS	7/12	A	0.66	0.64
Tractor Supply	TSCO	7/12	A	0.75	0.69
Armed	ARM	7/12	B	0.78	0.16

- 6.) Go to files and select Import / Data and the following box will come up.
- 7.) Change import type to Current Quote/Other Data
- 8.) Make sure ASCII Text File is set if you have a text file format.
- 9.) Chose the Format you saved earlier for File Format.
- 10.) Press Import and if all goes well you have the following information now loaded into IRT



You can make a Custom Column

Ticker	EPS Date	Name	Last	Change	%Change
ESRX	7/28/04	Express Scripts, Inc.	73.27	-.35	-0.48%
PFE	7/23/04	Pfizer Inc	34.04	+.10	+0.29%
SGP	7/21/04	Schering Plough Cp	18.01	+.19	+1.07%
ZMH	7/21/04	Zimmer Holdings Inc	85.70	-3.20	-3.60%
ILXO	7/19/04	ILEX Oncology, Inc.	23.91	-.59	-2.41%
LUV	7/15/04	Southwest Airlines	15.56	+.03	+0.19%

Or include in an annotation in a chart.

Update Indicator "Annotation" [X]

Update NOTE[ZMH (D)] EPS Date: %T#30 Time: %T#31 for

Text:

Font:

Show

Last Bid Ask Change User Data

RTL Tokens:

Draw Border Draw Background

Attach to bar:

Draw Marker:

Foreground - Background Colors.....

Use Alternating Colors.....

Scope:

Recalculate every

Calc'd 2 times (0ms) as of 13:46:29

Presets [v]

Here is sample

